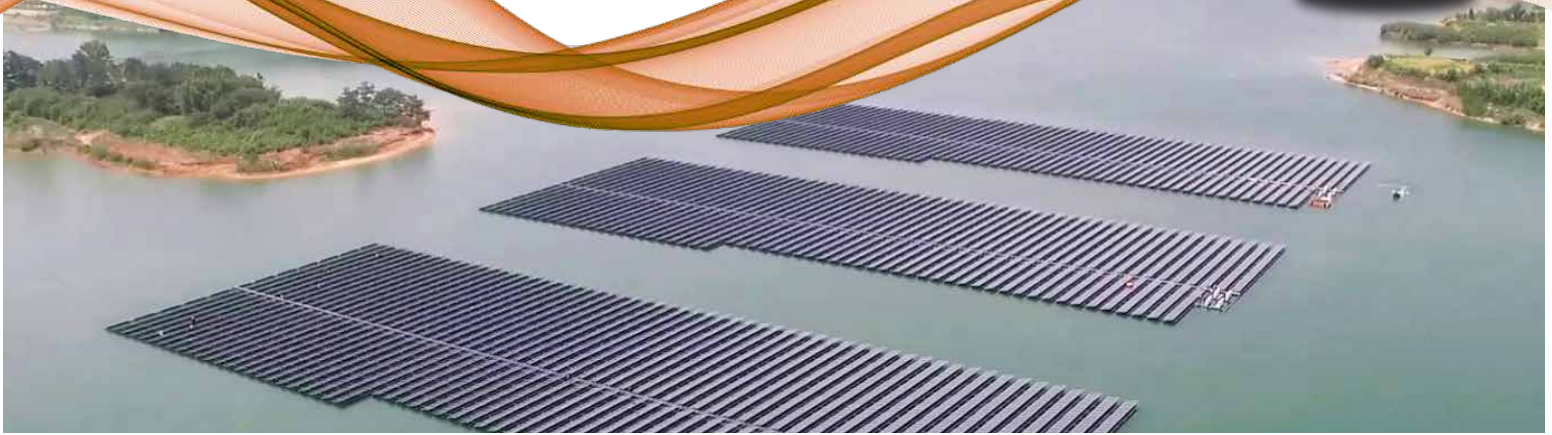


SOLAR POWER PLANTS ON LAKES AND DAMS

SP-110 Silicon-cell Pyranometers



Korea Water Resource Corporation (K-water) is the number one clean energy producer in Korea. The company operates several clean energy plants including hydropower, tidal power, wind power, and solar photovoltaic power. More recently, K-water developed the world's first ecofriendly floating solar photovoltaic power system called SOLATUS, which was installed at Hapcheon Dam. The company plans to install additional floating photovoltaic power plants on dams and lakes in Korea by 2022.

Part of the installation process is determining the best location for the power plant. To find these locations, K-water is studying solar radiation at different angles, using a configuration of eight Apogee SP-110 Silicon-cell Pyranometers, and weather data, using wind, temperature, and humidity sensors.

Once K-water has collected all of the data from the sensors, it will be reviewed to find the best location for the new power plants and the optimal angles for the solar panels to collect power throughout the day.



Apogee pyranometers determine locations for solar power plants

Application Summary

Summary

Studying solar radiation at different angles to determine locations for solar power plants.

Apogee Sensors Used

SP-110 Silicon-cell Pyranometer

Contributing Organizations

K-water (Korea Water Resource Company)
Encosys Co.

Location

Korea

